

**orelogy**<sup>™</sup>  
an idoba company

**Gold**  
Case Study

Managing the Obotan project





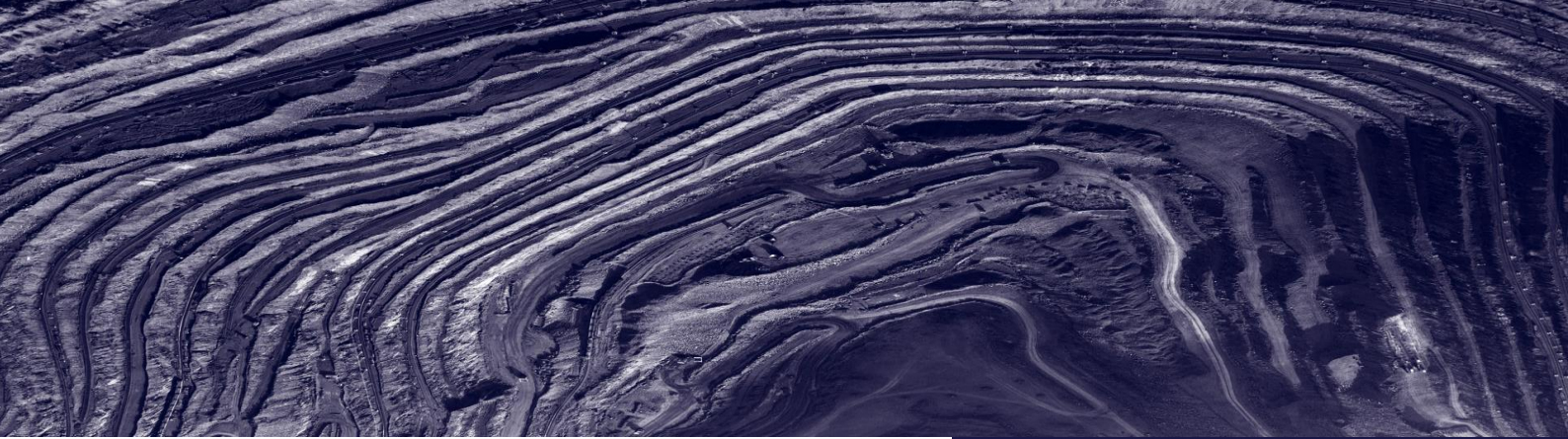
# Managing the Obotan project

## Contents

---

Orelogy overview	1
Project Summary	2
Challenge / Scope	3
Business Benefits	4

---



## Partners in Mine Planning

orelogy is a specialist mine planning consultancy with extensive experience in the planning and management of a resource. orelogy personnel have operational and consulting experience throughout the world, in a range of different commodities.

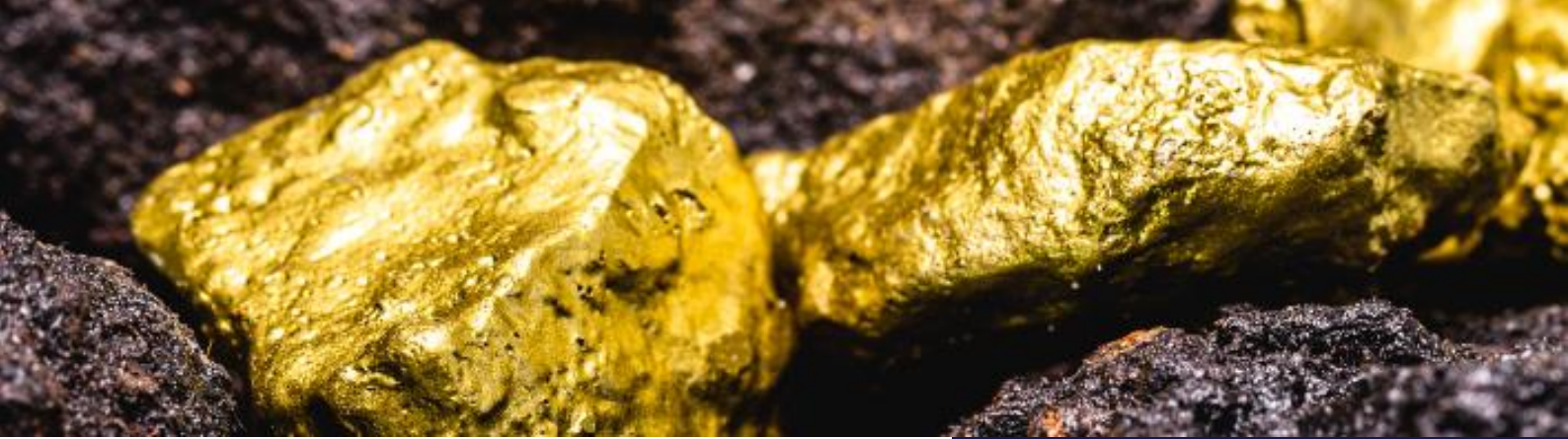
Established in 2005, orelogy is an agile and innovative consultancy that adopts a partnership approach with clients to develop practical solutions within a strategic framework. This approach ensures the delivery of key client outcomes.

In February 2022 orelogy was acquired by idoba.

idoba is an innovation ecosystem that identifies and solves problems by connecting technology offerings, expertise, and (mostly but not exclusively) energy and resources sector technical capability, to co-create a better future.

We now provide idoba with crucial mining domain knowledge as part of their vision to co-create a better and more sustainable future, in mining and beyond.

Our number one goal is to unlock the true value of your mining project



## Project Summary

The Obotan Gold Project is in Ghana and located within the northern 15km of the Asankrangwa Gold Belt. The project has a 2012 JORC/NI 43-101 resource of 4.51 Moz and a proposed mining operation of 11 years, processing at a rate of 3 Mtpa.

orelogy's involvement in the Obotan DFS started with a Due Diligence review of the PFS in September 2011. The role grew in December 2011 to that of Project Management of the DFS, including the Mining Engineering component, with the view to delivering a NI 43-101 Technical report.

The DFS provided the foundation for investment and ongoing work post DFS included:

- Mining construction, tender preparation, review & recommendations.
- Detailed implementation planning & budgeting for the first 2 years of operation.

## Project management & mining engineering

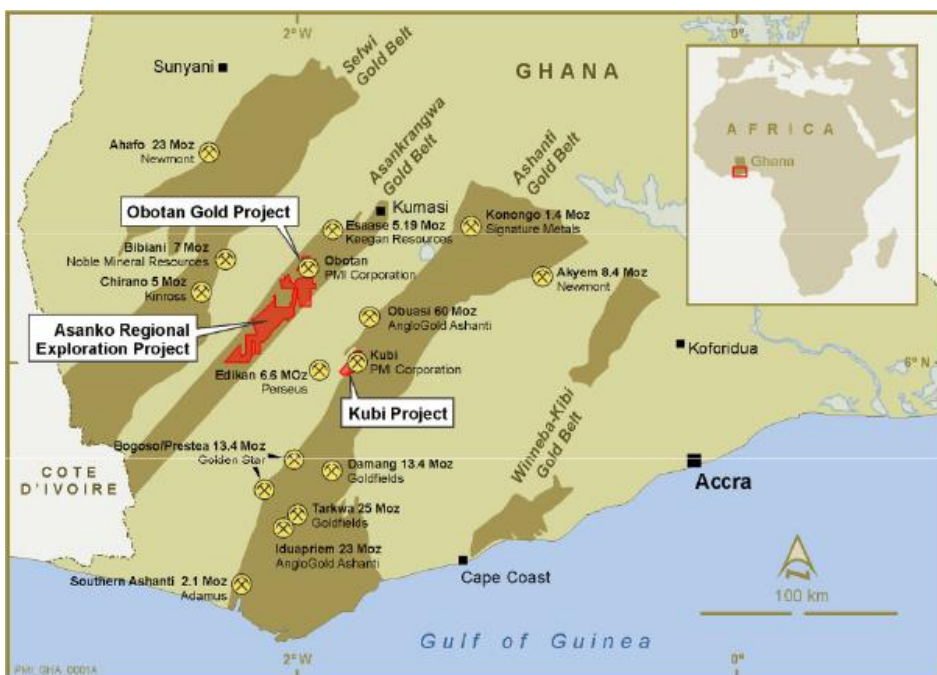
### Definitive Feasibility Study

### Project Obotan Gold Project

### Location Ghana

### Client PMI Gold Corporation

### Web [www.pmigoldcorp.com](http://www.pmigoldcorp.com)



**PMIGOLD**  
CORPORATION



## The Challenge

- Meeting a tight project time-line.
- Meeting low pre-strip expectations.
- Concurrently schedule 4 deposits in a 10 km radius.
- 13 year mine life.
- Lease constraints.

## The Scope

- Feasibility study development and completion.
- **Stage 1:** Project management of multi-disciplinary team:
  - Geology
  - Geotech
  - Environmental (including government liaison)
  - Advance approval process
  - Geohydrology
  - Process (Tailing dam design)
- **Stage 2:** Mining Study:
  - Optimisation
  - Pit Design
  - Scheduling using Open-pit scheduling software
  - Costing
- Develop mining contract RFI followed by bid evaluation and contractor recommendation.

Project  
management  
keeps multi-  
discipline  
study team  
focused to  
deliver  
timely report



## Business Benefits

**Owner/shareholder:** Avoiding delays of any significance and add value to project by developing optimised practical schedules.

**Mining Engineer:** Provide practical mine plans that can be further developed during the implementation program. Efficiently evaluated over 80 different schedules.

**Process engineers/metallurgists:** Mill feed schedule that meets processing requirements in terms of material blend and headgrade.

## orelogy quote

“Effective communication and leadership amongst different disciplines is the driver of successful project outcomes.

orelogy was able to harness the reins and ensure all facets of the DFS study team were informed and knowledgeable about the entire mine planning process, alleviating communication breakdowns to deliver a timely Technical Report”

**Carel Moormann**  
**Principal Mining Consultant**  
orelogy

**Contact orelogy,  
an idoba company  
for more information.**

**+61 (0) 9318 5333**

**[info@orelogy.com](mailto:info@orelogy.com)**

**[www.orelogy.com](http://www.orelogy.com)**

**orelogy**<sup>TM</sup>  
an idoba company

© orelogy Group Pty Ltd. All rights reserved. orelogy is a registered trademark of orelogy Group Pty Ltd in Australia and/or other countries.

All other brand names, product names, or trademarks belong to their respective holders. orelogy reserves the right to alter product offerings and specifications at any time without notice, and is not responsible for typographical or graphical errors that may appear in this document.